



IP65 safety transformers for lighting pools and fountains




trasformatori

MADE IN ITALY

NEWS 2016



Safety transformers for lighting resin-bonded pools and fountains in an IP65 plastic case



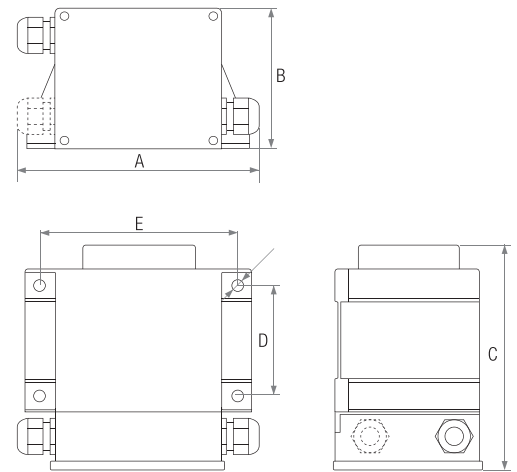
Power: 50 ÷ 600 VA
Input voltage: 230 VAC
Secondary circuit output voltage: 12 - 24 VAC

Technical data :

Series: single-phase
Duty cycle: continuous
Frequency: 50/60 Hz
Protection rating: IP65
Connections: external connection through terminal board and cable gland
Ambient temperature: +35°C MAX
Protection against direct and indirect contact: classe II
Resistant to: short-circuit and overload
Thermal insulation class: B/130°C
Approvals: EN61558-1 EN61558 2-6



IP65 single-phase transformers for safety circuits.
The insulation between the primary and secondary windings is double and reinforced.
Equipped with thermal protection and fuse-holder on the primary, they are encapsulated with epoxy resin in plastic cases.
The connections are external, through terminal board and cable gland bushings.
TLUX series designed to power lighting headlamps placed in a wet and dusty environment.



Code Pri 230V Sec 12V	Code Pri 230V Sec 24V	Power (VA)	Primary 230V		Secondary					Dimensions (mm)					
			Fuse 5x20	Cable gland	Voltage (V)	Current (A)	Voltage (V)	Current (A)	Cable gland	A	B	C	D	E	Weight (Kg)
TLUX50AA	TLUX50AB	50	T 0,315	PG 11	12	4,17	24	2,08	PG 13,5	145	79,5	118	45	103	2,4
TLUX10BA	TLUX10BB	100	T 0,63	PG 11	12	8,33	24	4,17	PG 13,5	145	79,5	118	45	103	2,8
TLUX20BA	TLUX20BB	200	T 1,25	PG 11	12	16,7	24	8,33	PG 16	155	88	126	50	115	4,2
TLUX30BA	TLUX30BB	300	T 2	PG 11	12	25	24	12,5	PG 16	182	110	174	85	150	6,8
TLUX40BA	TLUX40BB	400	T 2,5	PG 11	12	33	24	16,67	PG 16	182	110	174	85	150	8
TLUX50BA	TLUX50BB	500	T 3,15	PG 11	2 x 12	2x 20,8	24	20,8	PG 16	182	110	174	85	150	8,5
TLUX60BA	TLUX60BB	600	T 4	PG 11	2 x 12	2x 25	24	25	PG 16	182	110	174	85	150	8,6

The data in this catalogue are not binding. We reserve the right to make changes without notice.